
**Prof. dr. Maud Graff
(project leader) &
Marjolein Thijssen
(PhD student)**

Successfactors Dementia Friendly Societies (Mentality)

ZonMw Memorabel project



Prof. dr. Maud Graff (project leader) & Marjolein Thijssen, PhD student

Institute for Quality of Healthcare, Radboudumc Alzheimer Center, Radboudumc, Nijmegen , NL

In collaboration with: dr. Ramon Daniels (co-project leader), Zuyd University for Applied Science,

Research Centre Assistive Technology in Healthcare, Heerlen, NL

& The Division of Rehabilitation & Elderly, University of Nottingham, UK



Radboudumc

Overview of presentation

Project:

- focus & title
- aim
- research questions:
 - workpackage A
 - workpackage B
 - workpackage C
- time frame workpackages



Project focus & title:



Improving & sustaining positive health

of people with dementia (PWD) & their carers

by creating Dementia Friendly Societies/Communities (DFS)/(DFC)

Project aim:

To develop, test & disseminate:
a framework & (advice) manual
to create tailor-made DFS's/DFC's

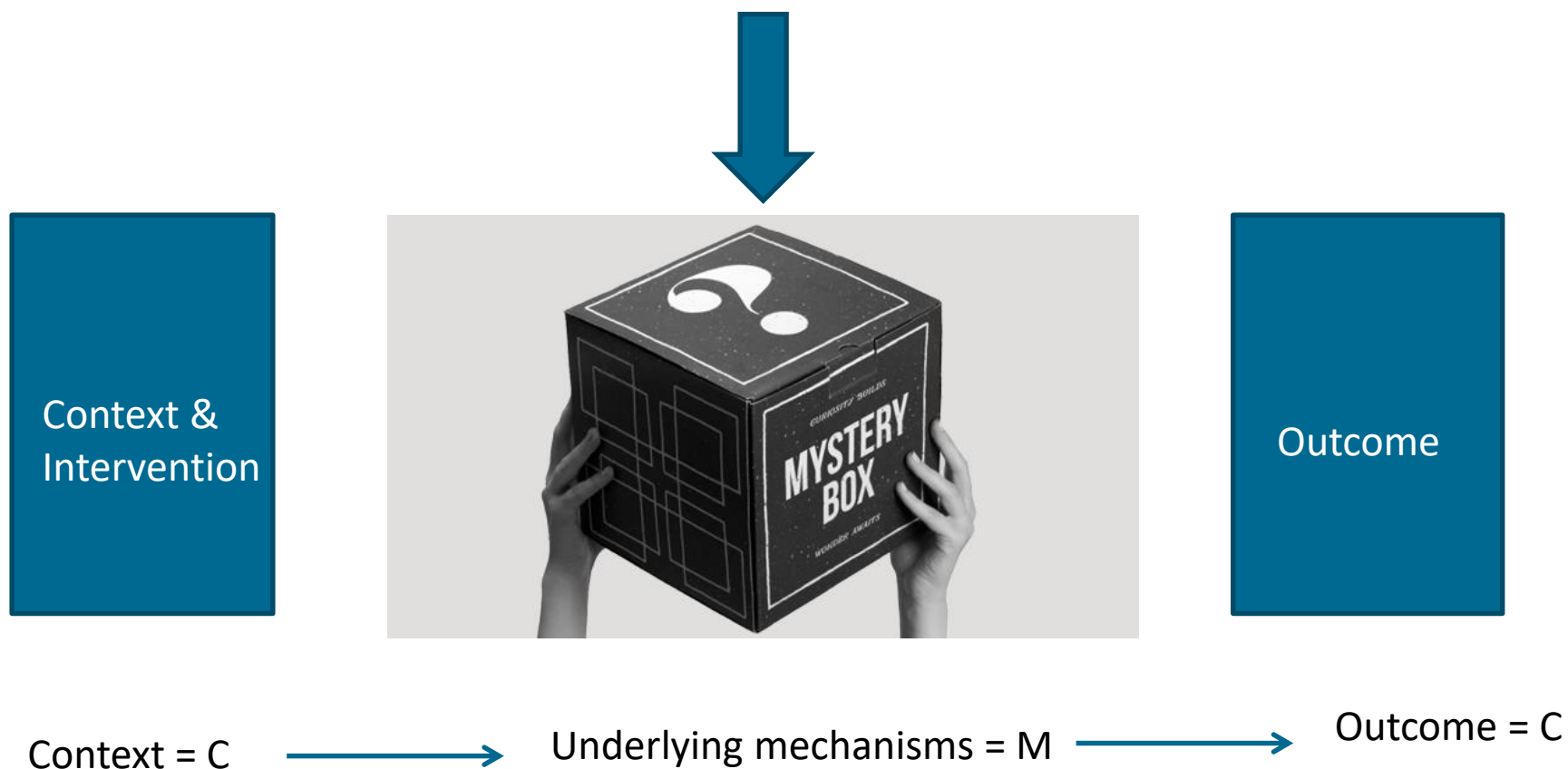


Research question



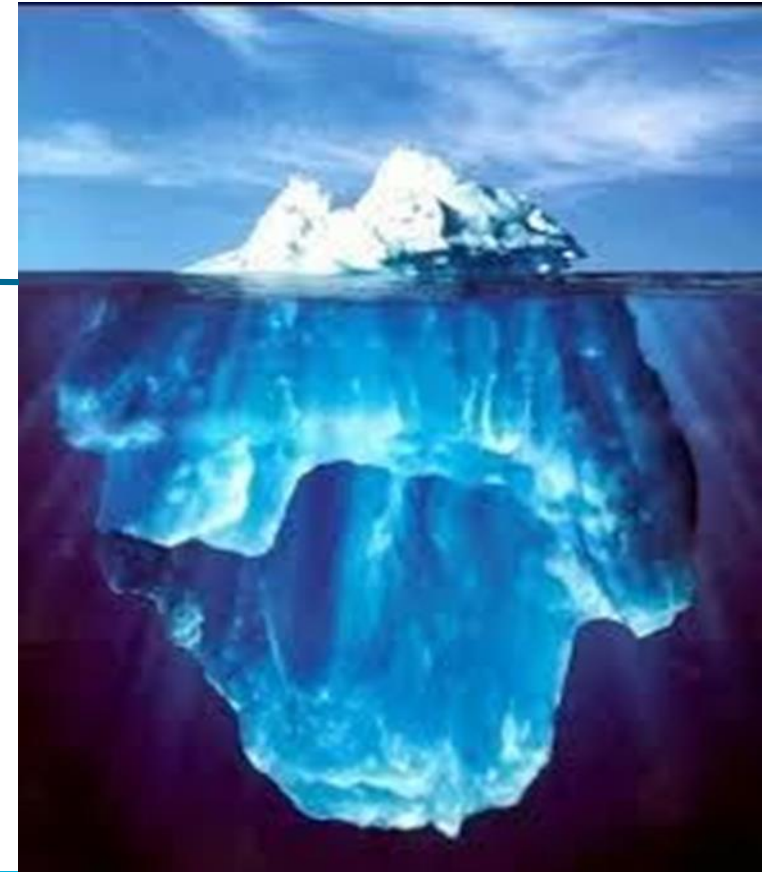
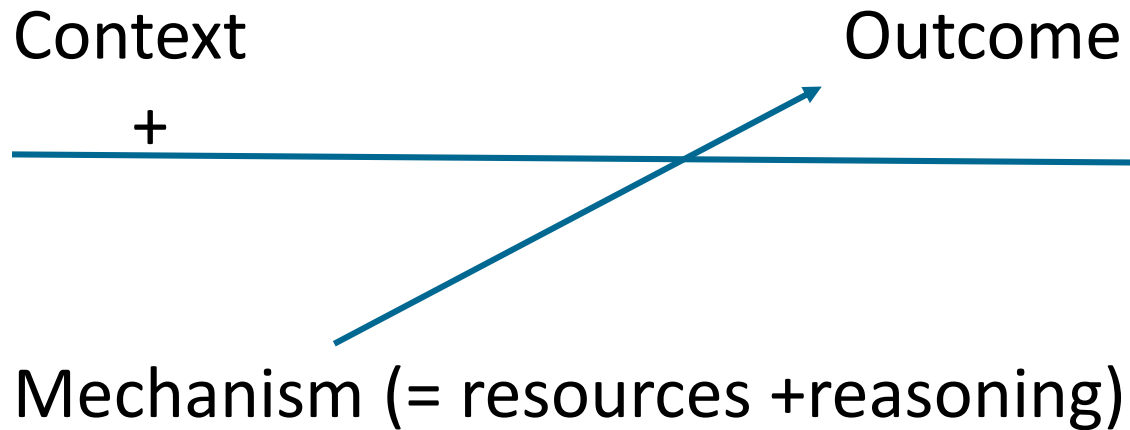
What kind of DFS/DFC initiatives work, for whom, in what circumstances, in what respect, to what extent, why and how are these related (Pawson, et al; 2005)

Realist methodology



Bron afbeeldingen: <https://www.trustedreviews.com/news/deal-firebox-black-box-get-155-of-mystery-gifts-for-just-75-2943259>

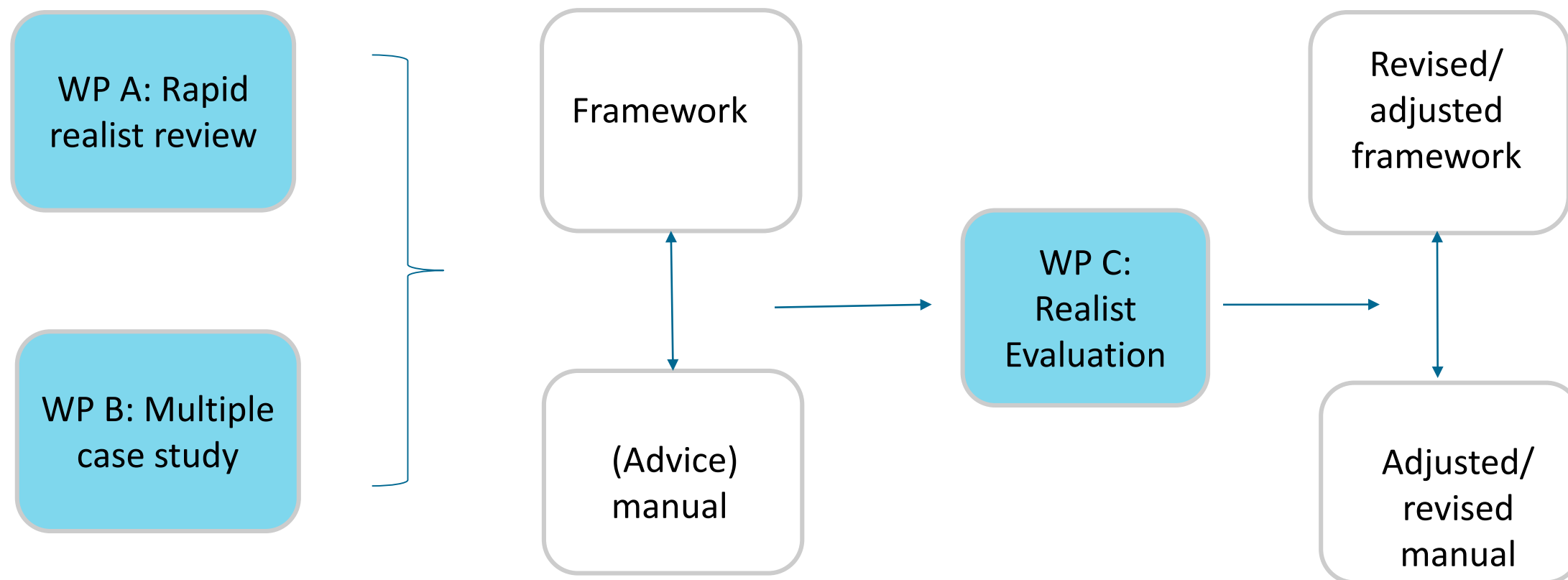
Realist Causation: Context-Mecanisms-Outcome configuration



Basic componetents of a realist causal explanation

Pawson R, & Tilley N. 1997 [2003]. *Realistic Evaluation*. Thousand Oaks, CA: Sage Publications.

Workpackages in the project



Workpackage A; academic and grey literature



- What outcomes are defined, achieved and measured in achieving Dementia Friendly societies (DFS)?
- What are the underlying mechanisms described in scientific and grey literature?
- What contextual factors are described that play a role in DFS?
- How and why do context and mechanisms interact when contributing positively, or negatively, to the outcomes of DFS.
- Get a first understanding of :
Context & intervention, underlying Mechanisms, Outcome: **make first C-M-O program theories!**

Definities

- Dementia friendly communities (DFC) are those where people with dementia (PWD) and their carers feel understood, respected, have access to support, and feel confident they can contribute, participate and engage to community life. In a DFC, the physical and social environment is responsive to the needs of a PWD, people are aware of and understand dementia, and PWD and their carers feel included and involved, and they have choice and are supported to have as much as possible control over their day-to-day lives.

Adapted from Alzheimer's Society, 2013. Guidance for communities registering for the recognition process for dementia-friendly communities.& Smith K, Gee S, Sharrock T, Croucher M.(2016) Developing a dementia-friendly Christchurch: perspectives of people with dementia. Australas J Ageing. 35:188–192. [PubMed: 27061350]

Definities

- Dementia friendly initiatives (DFI) are activities that share an individualized and holistic approach that promotes dignity, empowerment, engagement, and autonomy to enable well-being of persons with dementia and the needs of their caregivers throughout the dementia trajectory .

Adapted from: Hebert, C.A., Scales, K. (2017) Dementia friendly initiatives: A state of the science review. Dementia 0(0) 1–38

DF initiatives

Environmental adaptation

Other Examples

Technology

Le



Memory houses, made by students of primary school



Play about dementia by theatre associations



Specific corner in Library about dementia-> dementheek'



activities/tea time



Literatuur search phase A

Search	1	2
Topic	Dementia friendliness	Social participation (2) in the context of dementia (1)
Data bases	Pubmed, Embase, ASSIA, CINAHL, Google Scholar	Pubmed, Cinahl, Embase
Included	14	12
Tijdvak	2006(1)-2018/2015-2018	2011-2018

DFI Found in WP A

- Adaptation physical and social environment/neighborhood.
- Educating police about dementia and how to act.
- Adaptation physical and social environment (communication) local pharmacy .
- Alzheimer/Memory cafes

Community support

Community involvement

- Sports, f.e. swimming, boccia, walking and soccer.
- Community singing group
- Viewing and making art

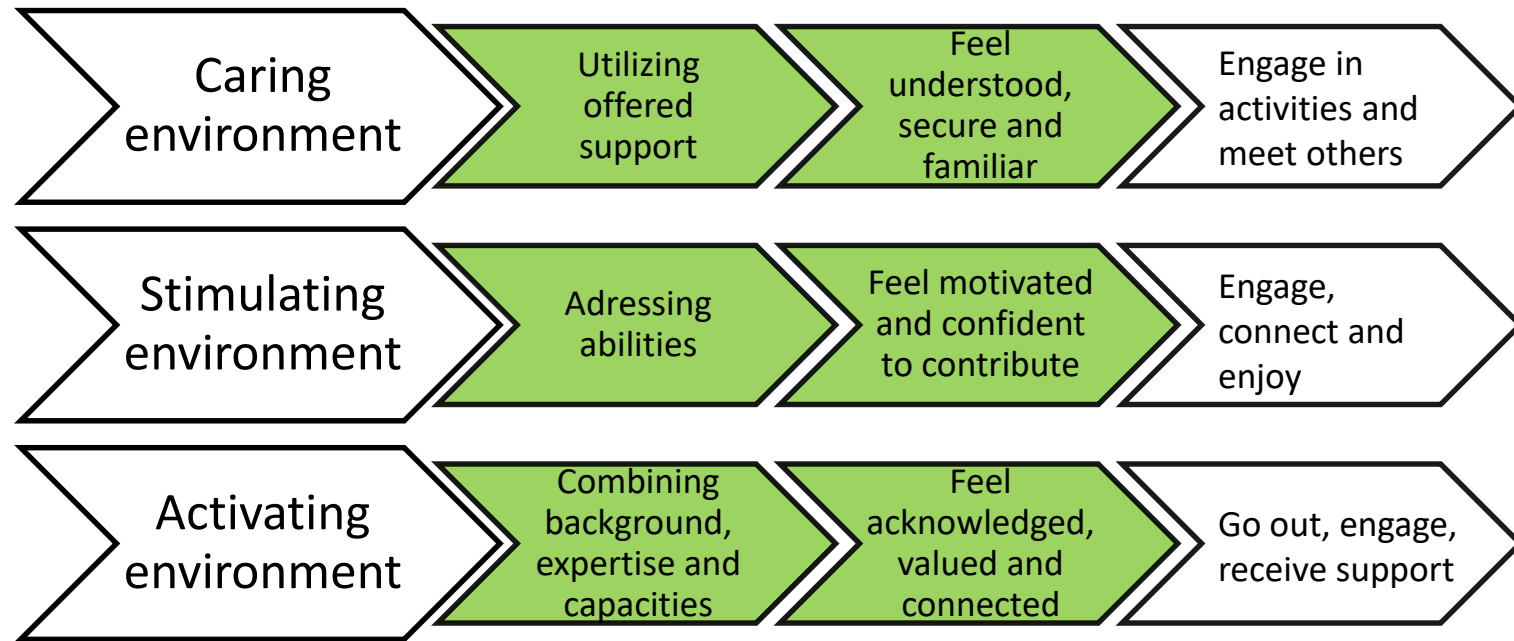
- Increasing awareness about dementia with involvement of profs, politici, volunteers and pwd in the centre.
- an event co-produced and delivered by and for people affected by dementia.
- Creative musical/opera project.

Whole community and citizenship

Mechanisms influencing the success of dementia friendly initiatives for persons with dementia and their caregivers.



Results





Workpackage B: multiple case study best practices

- How do stakeholders of 5 local best practices of dementia friendliness in NL & UK, describe dementia friendliness?
- And what are, according to them the contextual factors, underlying mechanisms and outcomes that play a role in creating and sustaining dementia friendliness in their context, and why?

- Boxtel
- Roermond
- Haarlemmermeer
- Heerenveen
- Sheffield

5 best practice
regions of DFS/DFC

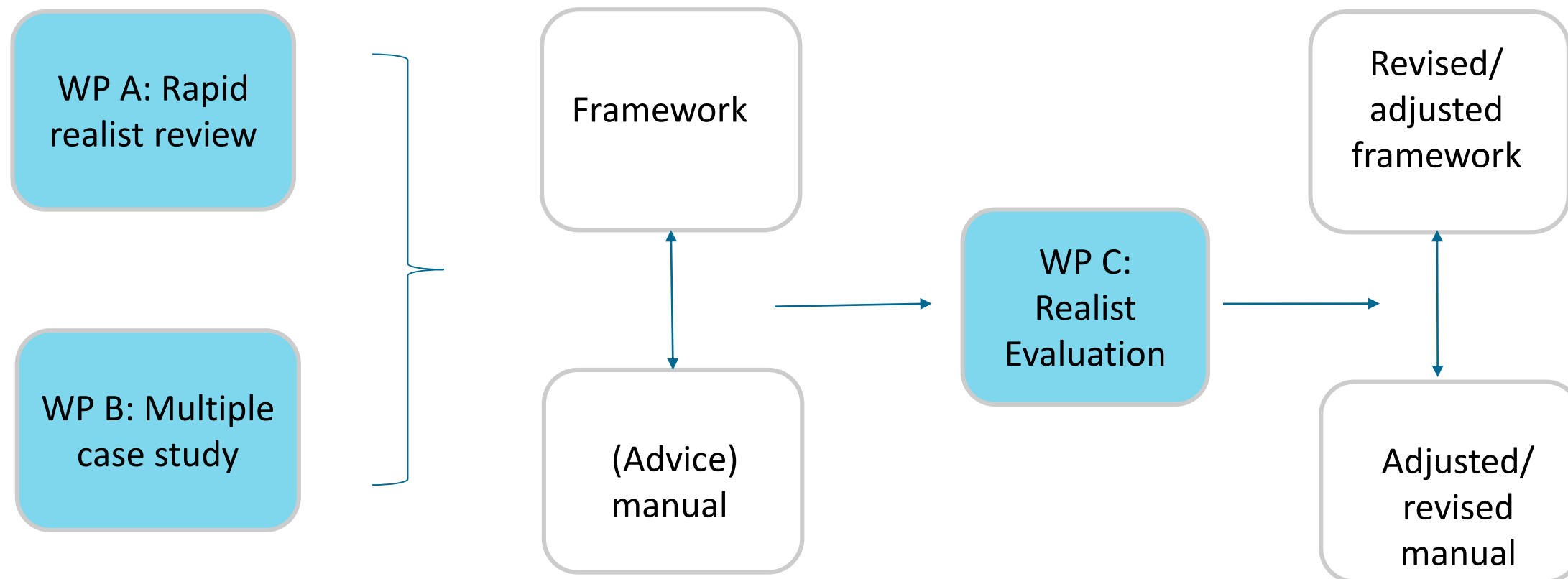
Research data:

- Documentations/reports/websites
- Observations
- Interviews

Outcomes: dementia-friendliness



Phases in the project



Research questions:



Workpackage C:

4b. What are positive outcomes of successful DFS/DFC?

And how can these be measured?

5a. What kind of DFS/DFC initiatives work, for whom, in what circumstances, in what respect, to what extent, why and how are these related

5b. What is the frameworks & advice manuals feasibility when testing in different pilot regions (pilot DFS/DFC) in a tailor-made way?

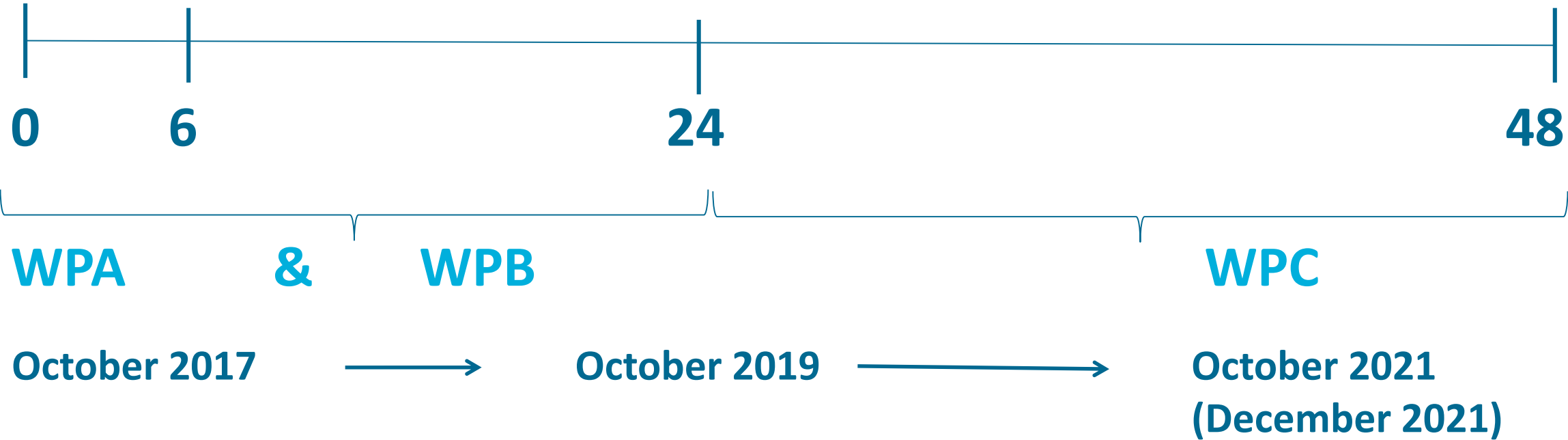
The pilot regions are: Heerlen, Maasgouw, Nijmegen, Wijchen

6. What are recommendations for creating future sustainable DFS?

7a. How should an intervention advice manual based on the framework, expert advice, and recommendations of stakeholders look like?

7b. What information is needed for nationwide dissemination of this framework with manual to policy makers?

Time frame workackages (WP) in months:



Questions?

Community gardens



Library

